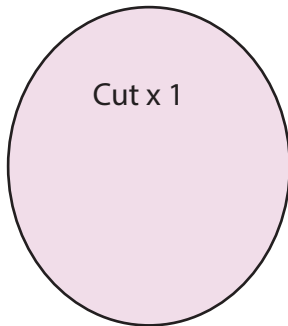
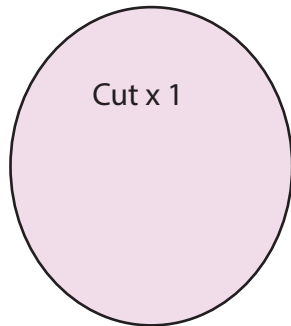
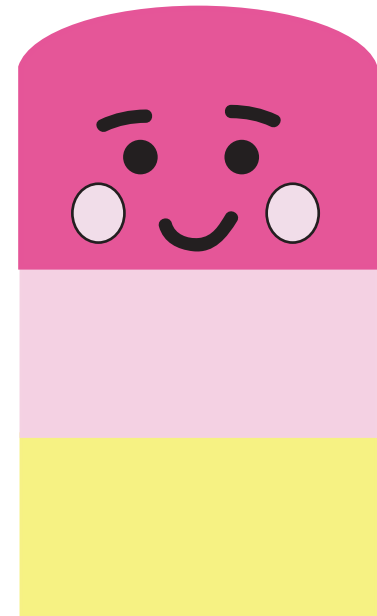


Cut x 2
Pattern includes 1/4" seam allowance

Ice pop Sewing Pattern
Created by Tina O'Rourke
www.missdaisypatterns.com
©2016



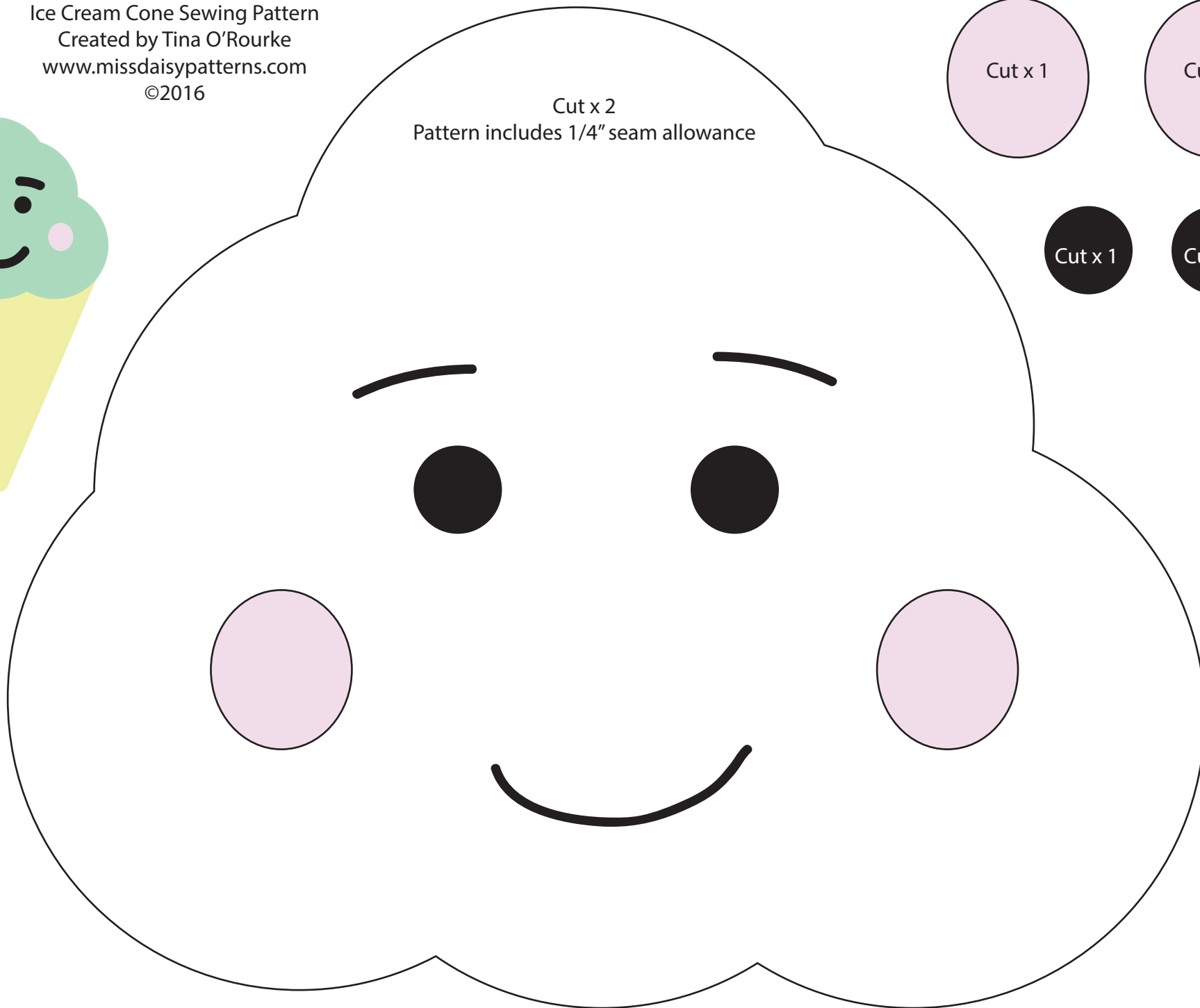
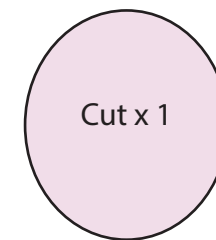
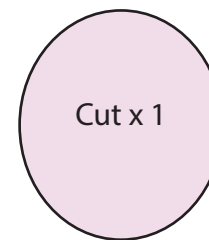
Cut x 4
Pattern includes 1/4" seam allowance

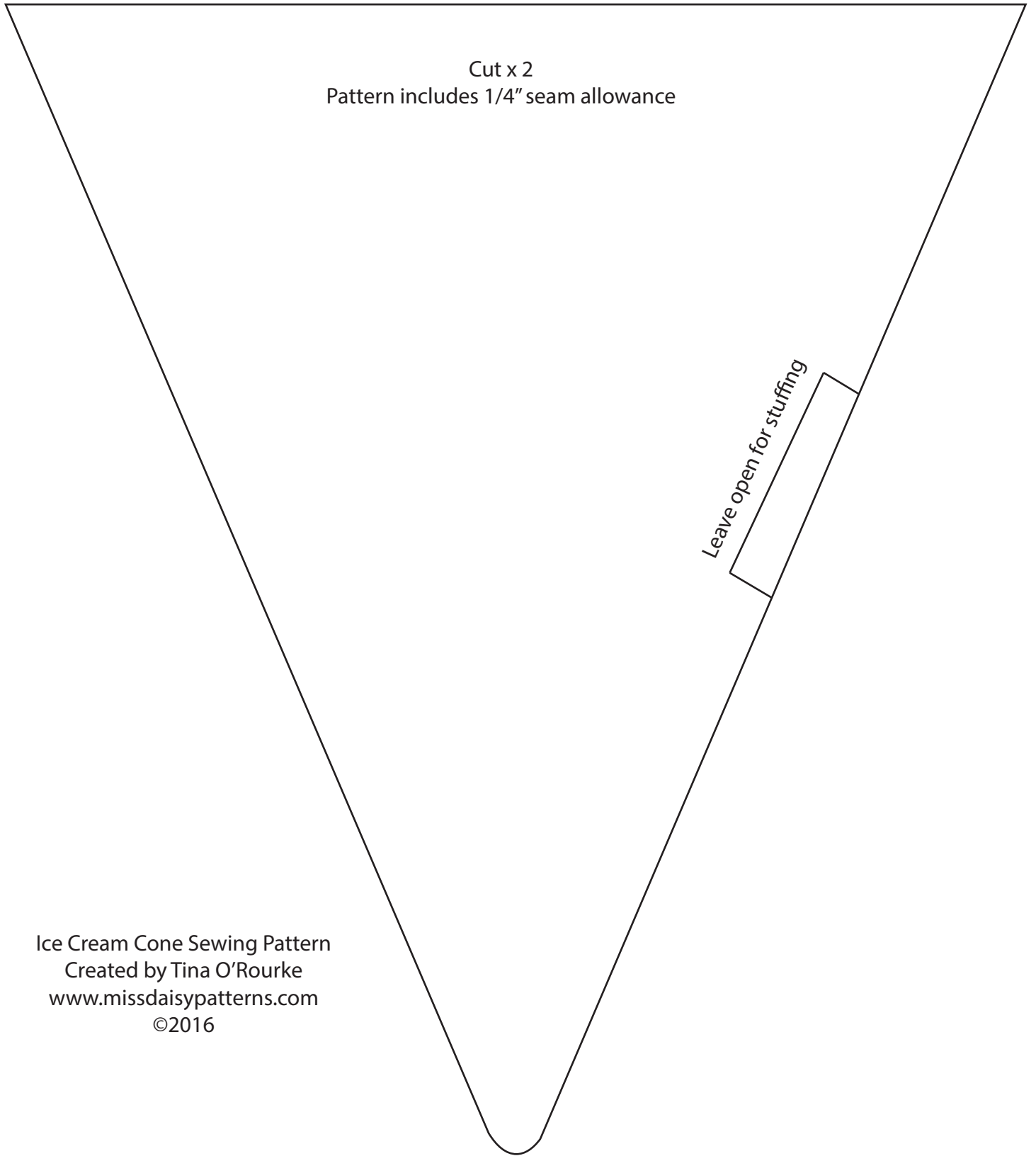


Ice pop Sewing Pattern
Created by Tina O'Rourke
www.missdaisypatterns.com
©2016

Ice Cream Cone Sewing Pattern
Created by Tina O'Rourke
www.missdaisypatterns.com
©2016

Cut x 2
Pattern includes 1/4" seam allowance





Cut x 2
Pattern includes 1/4" seam allowance

Leave open for stuffing

Ice Cream Cone Sewing Pattern
Created by Tina O'Rourke
www.missdaisypatterns.com
©2016